

**REFERENCE DOCUMENTS**

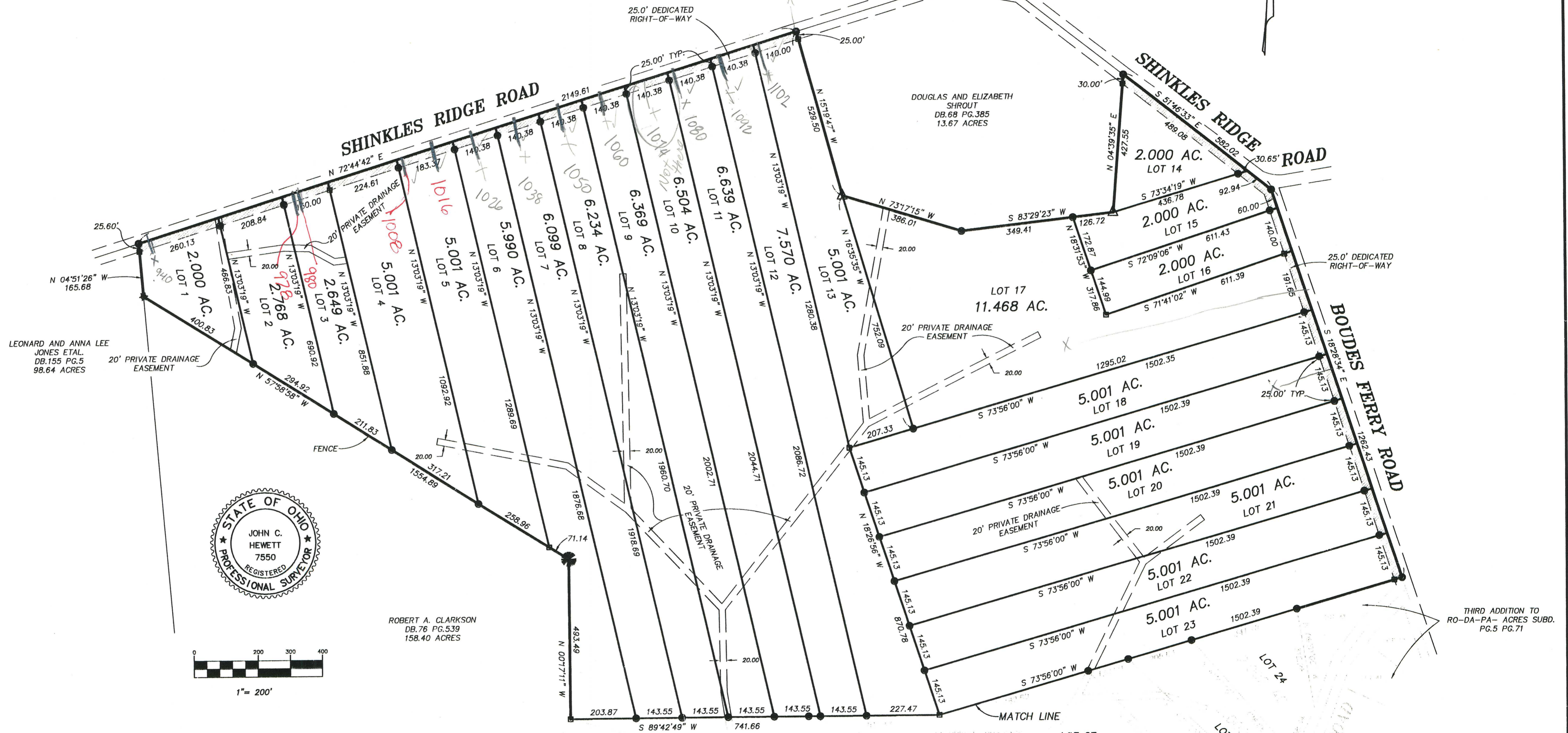
O.R. 40 PG. 624 DB. 269 PG. 612  
 DB. 227 PG. 809 O.R. 22 PG. 161  
 DB. 76 PG. 539 O.R. 3 PG. 851  
 DB. 174 PG. 44 DB. 243 PG. 278  
 DB. 68 PG. 385 O.R. 3 PG. 853  
 O.R. 12 PG. 435 DB. 278 PG. 589  
 DB. 273 PG. 713 DB. 199 PG. 753  
 DB. 170 PG. 510 DB. 267 PG. 886  
 DB. 202 PG. 272 DB. 212 PG. 630  
 DB. 271 PG. 415 DB. 212 PG. 660  
 DB. 271 PG. 397

RO-DA-PA ACRES SUBD. PB. 5 PG. 18  
 THIRD ADDITION TO RO-DA-PA ACRES SUBD. PB. 5 PG. 71

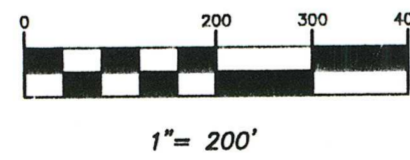
**LEGEND**

- = SPIKE (SET)
- △ = 5/8" IRON PIN (FND)
- = 1" IRON PIN (SET)
- = 3/4" IRON PIN (SET)
- ☆ = WOOD POST (FND)
- = 48" LOCUST TREE

BEARINGS BASED ON  
 THE N.E. LOT LINE OF LOT 37  
 THIRD ADDITION TO  
 RO-DA-PA- ACRES SUBD.  
 N 28°16'00" E 204.00'



LEONARD AND ANNA LEE  
 JONES ETAL.  
 DB. 155 PG. 5  
 98.64 ACRES



ROBERT A. CLARKSON  
 DB. 76 PG. 539  
 158.40 ACRES

THIRD ADDITION TO  
 RO-DA-PA- ACRES SUBD.  
 PG. 5 PG. 71

**SHINKLES RIDGE ESTATES**

IN  
 D. STEPHENSON'S MILITARY SURVEY NO. 630 AND 1058  
 LEWIS TOWNSHIP  
 BROWN COUNTY, OHIO  
 OWNER: MAPLE GROVE DEVELOPMENT CORP.  
 ORIGINAL 183.629 AC. O.R. BOOK 40 PAGE 624